



*Installation Manual*

*Version 1b*



*An easily operated user interface for Z88<sup>®</sup>  
for all Windows- (32- and 64-bit),  
for Linux (64-bit) and Mac OS X-Computers*

*This Freeware Version is the literary property  
of the Chair for Engineering Design and CAD,  
University of Bayreuth, Germany,  
composed and edited by  
Professor Dr.-Ing. Frank Rieg*

*with the aid of:*

*Dr.-Ing. Bettina Alber-Laukant, Dipl. Wirtsch.-Ing.  
Reinhard Hackenschmidt, Dipl.-Math.  
Martin Neidnicht, Dipl.-Ing. Florian Nützel,  
Dr.-Ing. Bernd Roith, Dr.-Ing. Alexander Troll, Dipl.-  
Ing. Christoph Wehmann, Dipl.-Ing.  
Jochen Zapf, Dipl.-Ing. Markus Zimmermann,  
Dr.-Ing. Martin Zimmermann*

*All rights reserved by the editor  
Version 1b July 2011*



is a registered trademark (No. 30 2009 064 238) of Professor Dr.-Ing. Frank Rieg

## INSTALLATION

The installation for Windows is managed by *Microsoft® Installer (MSI)*. The following versions are available in Z88 Aurora V1:

**32-bit Windows** **z88aurorav1\_32.msi**

**64-bit Windows** **z88aurorav1\_64.msi**

The respective installation menu leads you through the installation (Figure 1). The standard installation directory is located on „C:\z88aurorav1“.

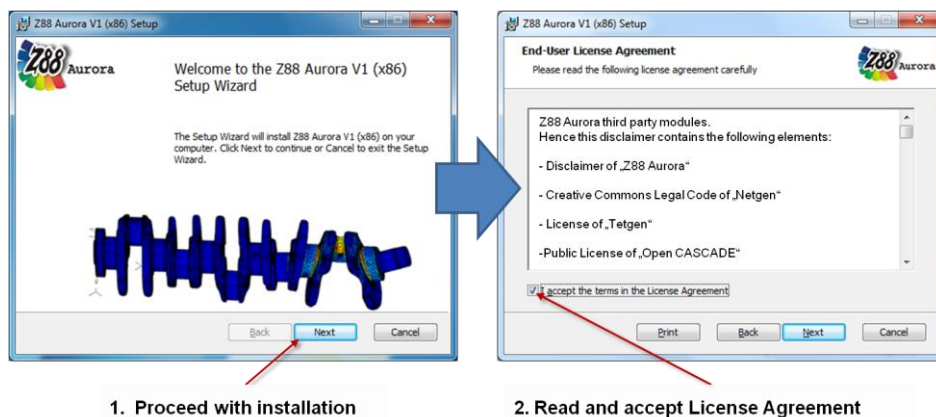


Figure 1: Begin installation

You can adjust this setting by choosing the respective folder in the installation dialog box (Figure 2).

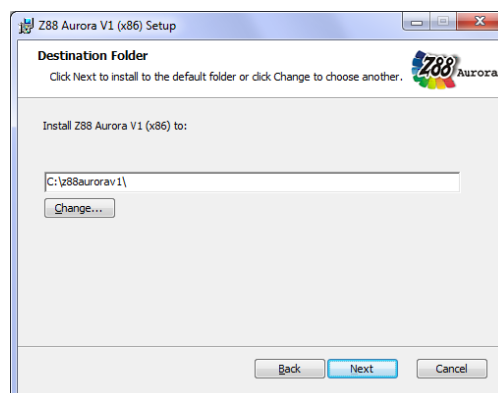


Figure 2: Begin installation

**⚠ Please note, however, that the respective installation directory must not contain any space characters!**

Finally choose "install" to complete the installation (Figure 3).

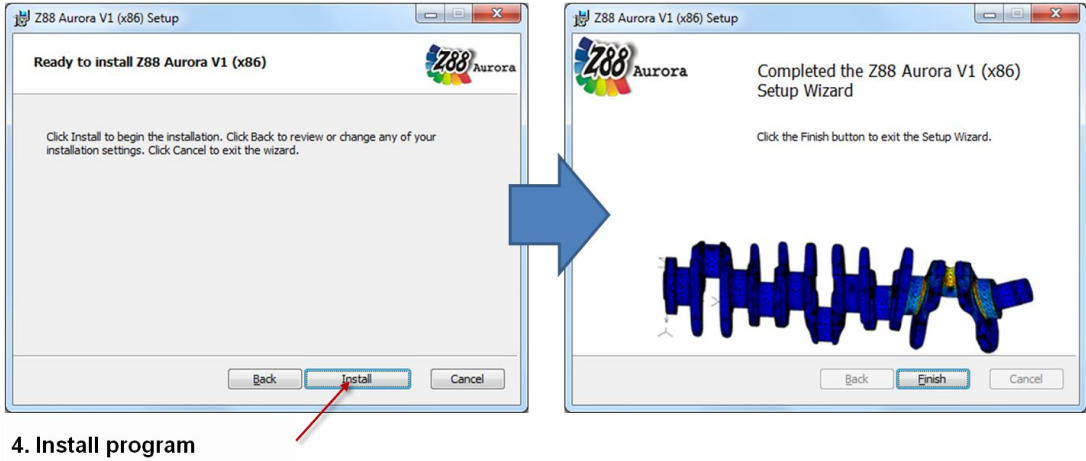



Figure 3: Begin installation

## FIRST START OF Z88 AURORA

To start the program either click the desktop icon  „Z88 Aurora V1“ or open the program via Start → „Z88 Aurora“ → „Z88 Aurora V1“. If you have not installed the desktop and start menu entries, you can start the program directly via Windows Explorer:

„[chosen installation directory]\bin\bin\z88aurora.exe“.

To adapt Z88 Aurora more easily to your specifications you are asked to enter the directories of the support modules and programs you want to use for Z88 Aurora, when you start the program for the first time.

For this purpose, a dialog window opens, where you can enter the respective programs (Figure 4):

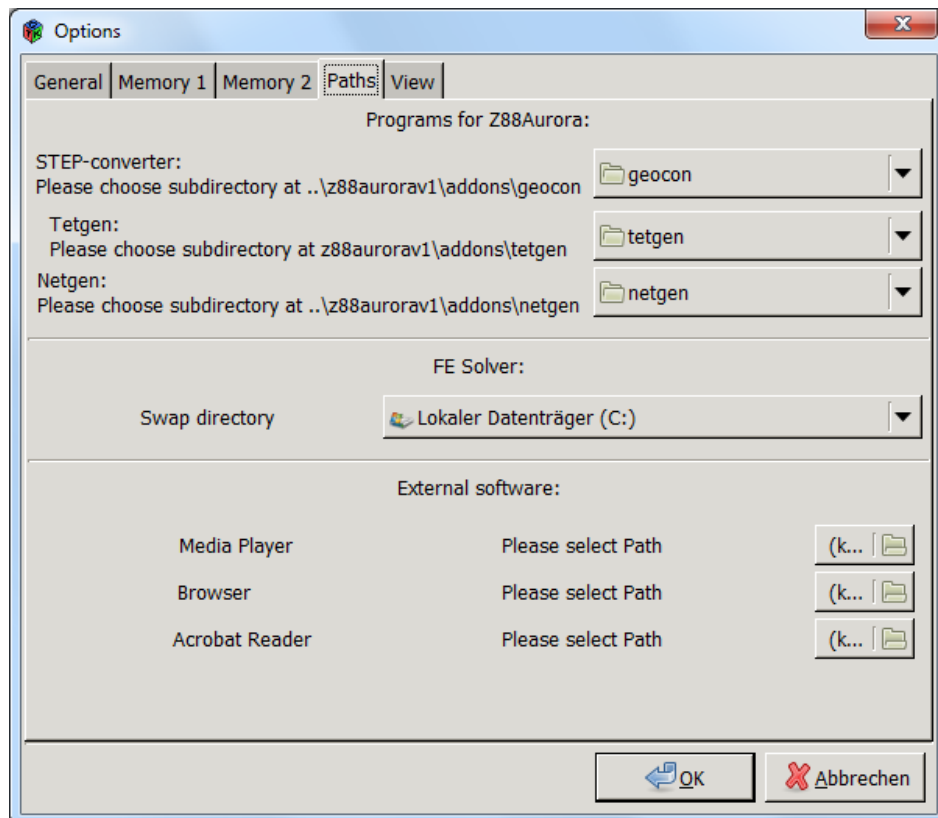


Figure 4: Customizing Z88 Aurora

### – STEP-Converter

Library for 3D-data exchange for the purpose of surface and solid modelling (by courtesy of Open Cascade S.A.S.) for importing STEP-files in Z88 Aurora.

„[chosen installation directory]\addons\geocon\win32 resp. \win64“

– **Tetgen**

Integrated tetrahedron mesher (by courtesy of Hang Si, WIAS, Berlin)

„[chosen installation directory]\addons\tetgen\win32 resp. win64“

– **Netgen**

Integrated tetrahedron mesher (by courtesy of Prof. Joachim Schöberl, Vienna University of Technology)

„[chosen installation directory]\addons\netgen\win32 resp. win64“

– **Storage directory**

Here, the intermediate calculation data of the FE-Solvers are stored temporarily.

– **Browser**

Selection of the browser by which the homepage and the user forum will be accessed from Z88 Aurora.

e.g. *Internet Explorer*; standard path „c:\Program Files\Internet Explorer\iexplore.exe“

– **Media Player**

Selection of the media payer by which the video tutorials will be accessed from Z88 Aurora.

e.g. *Media Player*; standard path „c:\Program Files\Internet Explorer\iexplore.exe“

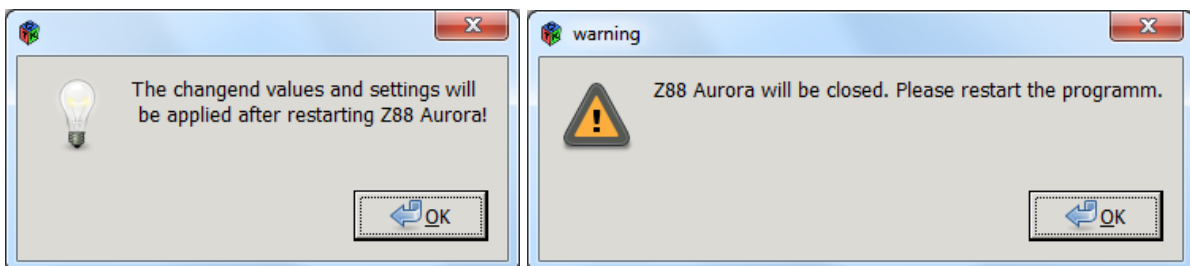
– **PDF-Reader**

Selection of the PDF-Reader by which the Z88 Aurora manuals can be accessed.

e.g. *Adobe Acrobat Reader*;

standard path „c:\Program Files\Adobe\Reader 9.0\Reader\AcroRd32.exe“

The dialog box as well as the message boxes are closed by clicking „OK“.



After this you can start Z88 Aurora.